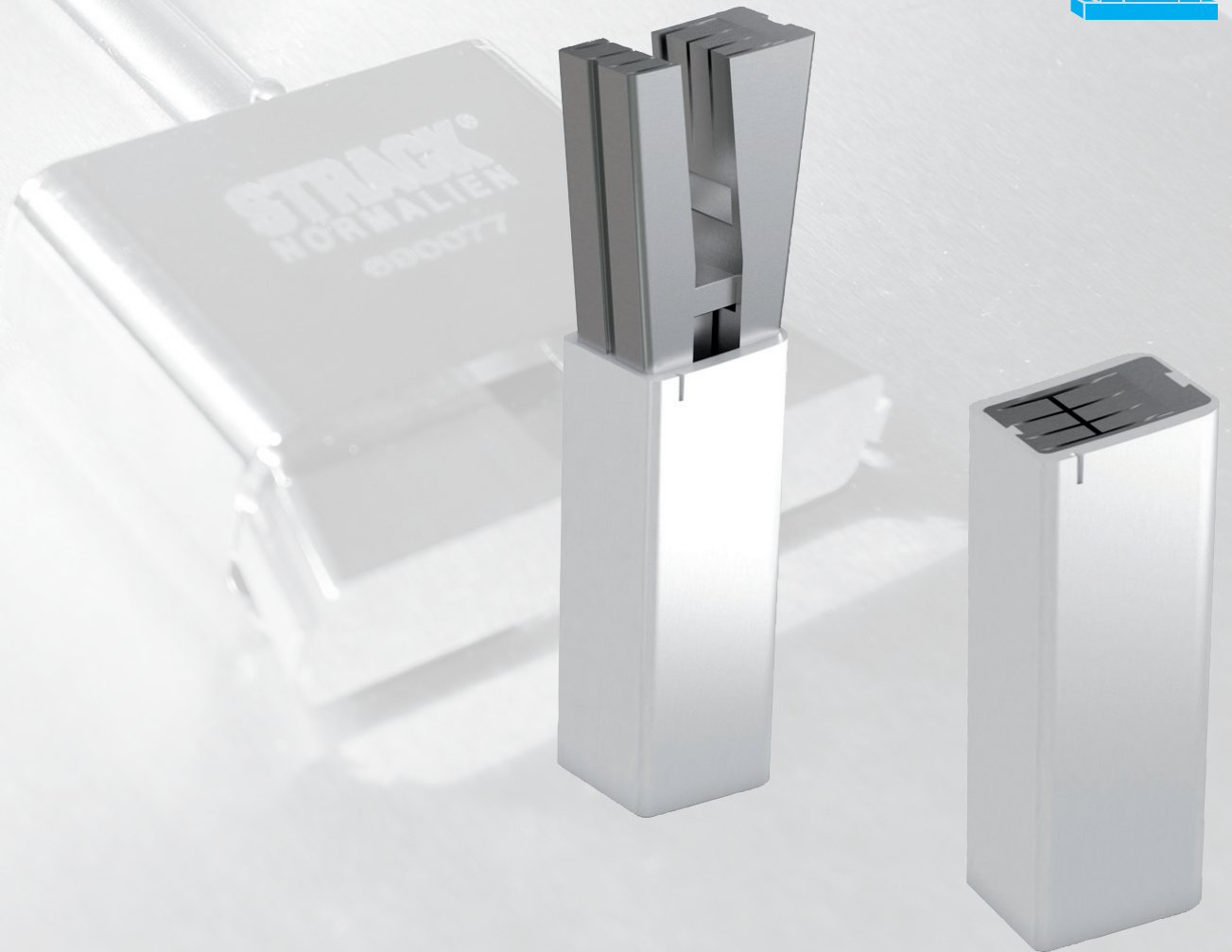


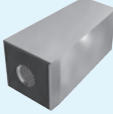
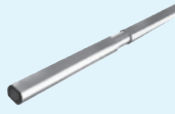

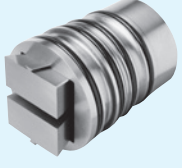

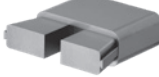


FALTEINHEITEN
FOLDING UNITS
UNITES DE PLIAGE



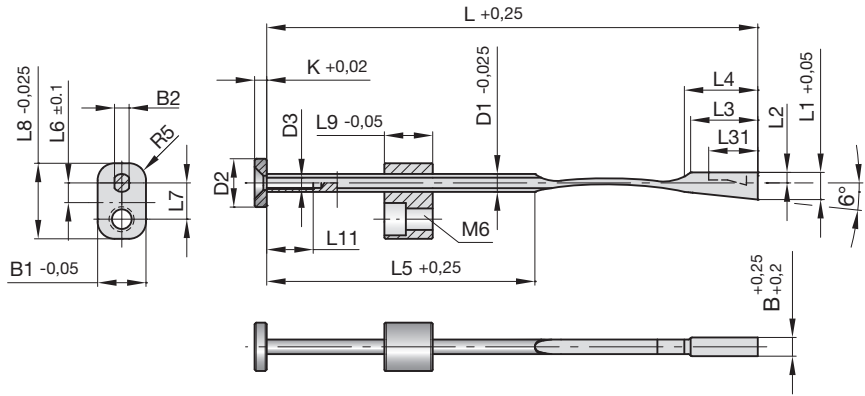
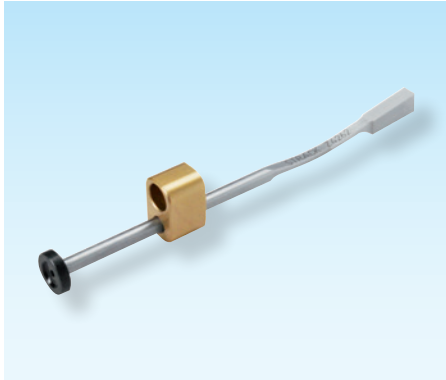
STRACK®
NORMALIEN

					
Z4262 5.60	Z4264 5.61	Z4262 5.68	Z4268 5.62	Z4280 5.65	Z4282 5.66
					
Z4284 5.67	Z4286 5.68				

Flexible Auswerfer

Flexible ejectors

Ejecteurs flexible



Z4262-

Mat.: 1.6565
Bronze

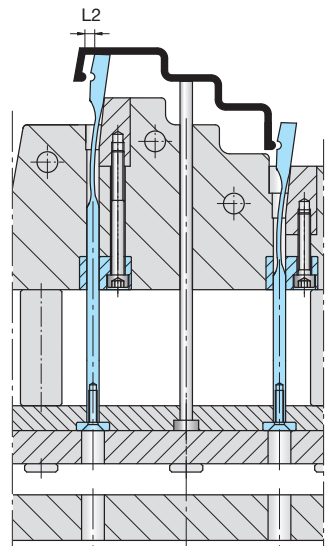
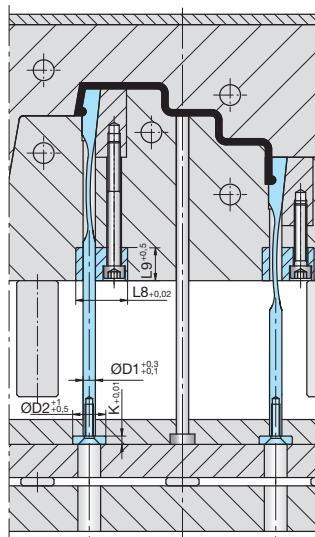
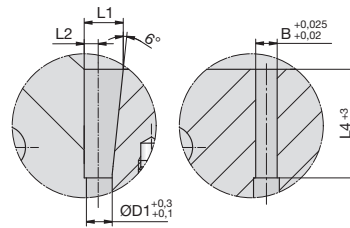
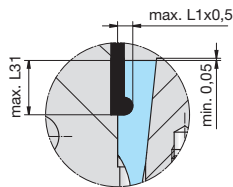


Z4262-B



5

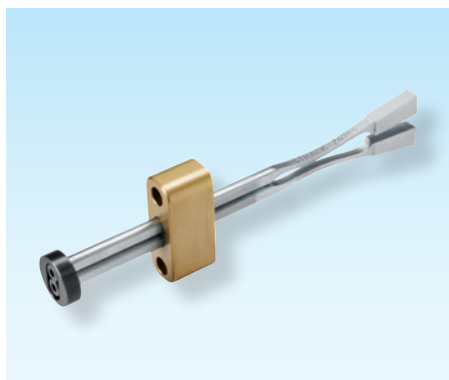
B	L	L1	L2	L3	L31	L4	L5	B2	D1	L8	B1	L9	L6	L7	D2	K	L11	D3
6	162,5	9,0	3,5	22	12,5	24,3	88	4,84	5,94	25	16	16	6	12	16	4	19	M4
8	162,5	9,0	3,5	22	12,5	24,3	88	5,08	6,35	25	16	16	6	12	16	4	19	M4
10	200,0	11,5	4,5	26	16,5	26,0	111	7,37	7,92	25	16	16	6	12	16	4	19	M5
12	200,0	11,5	4,5	26	16,5	26,0	111	7,37	7,92	25	16	16	6	12	16	4	19	M5
14	200,0	12,5	4,5	30	20,5	28,5	107	7,37	7,92	25	16	16	6	12	16	4	19	M5
16	200,0	12,5	4,5	30	20,5	28,5	107	7,37	7,92	25	16	16	6	12	16	4	19	M5



Flexible Auswerfer

Flexible ejectors

Ejecteurs flexible

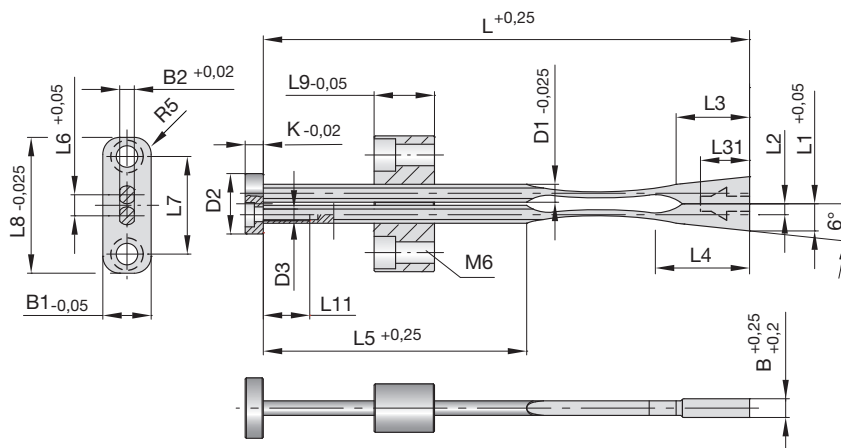


Z4264-

Mat.: 1.6565
Bronze

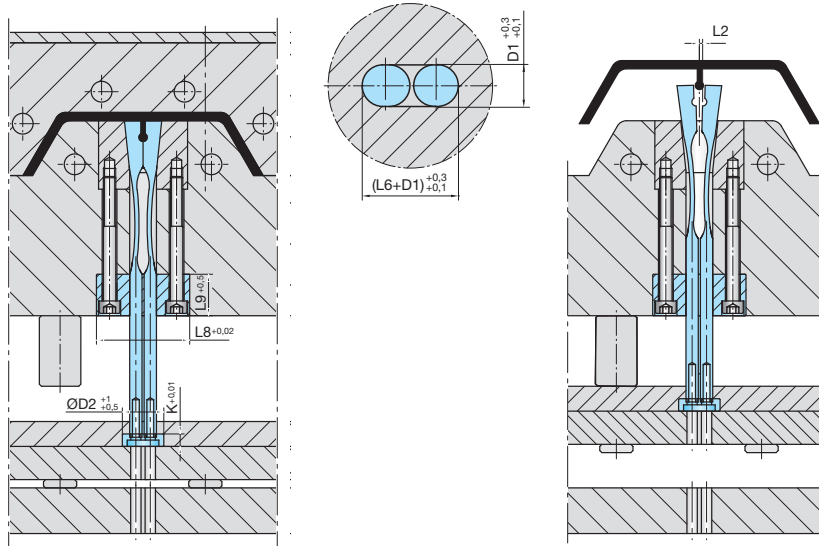
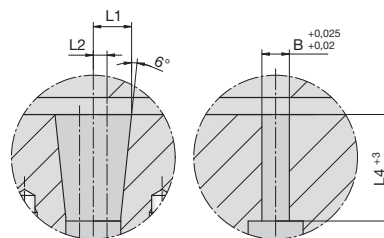
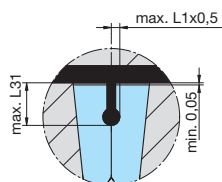


Z4264-B

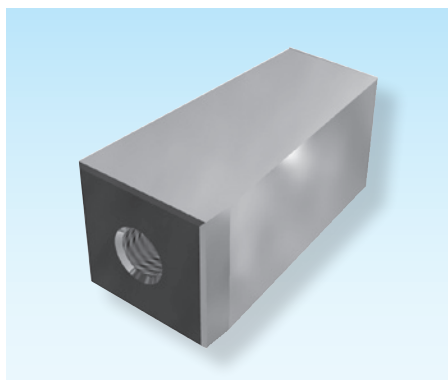


B	L	L1	L2	L3	L31	L4	L5	B2	D1	L8	B1	L9	L6	L7	D2	K	L11	D3
6	162,5	9,0	3,5	24,3	12,5	24,3	88	4,84	5,94	45	16	20	6,90	32,3	20	6	19	M4
12	200,0	11,5	4,5	26,0	16,5	30,0	111	7,37	7,92	48	16	20	8,94	34,4	22	6	19	M5
14	200,0	12,5	4,5	28,5	16,5	33,1	107	7,37	7,92	48	16	20	8,94	34,4	22	6	19	M5
16	200,0	12,5	4,5	28,5	16,5	33,1	107	7,37	7,92	48	16	20	8,94	34,4	22	6	19	M5

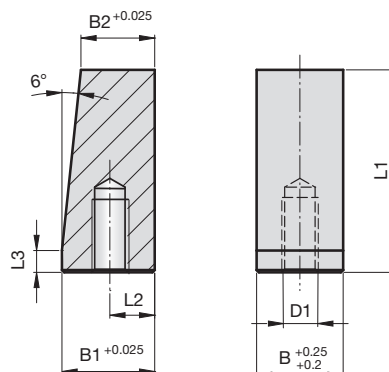
5



Verschleißblock für flexible Auswerfereinheit



Wear block for flexible ejector unit



Bloc d'usure pour l'unité d'éjecteur flexible

Z4266-

Mat.: 1.2311 nitriert
~ 68HRC

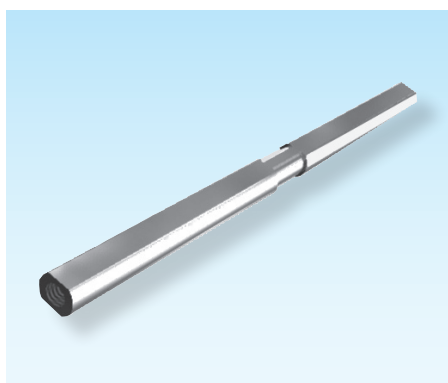
B	L1	L2	L3	B1	B2	D1
6	25,4	7,2	2,9	15,90	13,55	M5
8	25,4	7,2	2,9	15,90	13,55	M6
10	25,4	7,2	2,9	14,40	12,05	M6
12	25,4	7,2	2,9	14,40	12,05	M6
14	33,3	8,0	2,9	15,24	12,12	M6
16	33,3	8,0	2,9	15,24	12,12	M6

Z4266-B

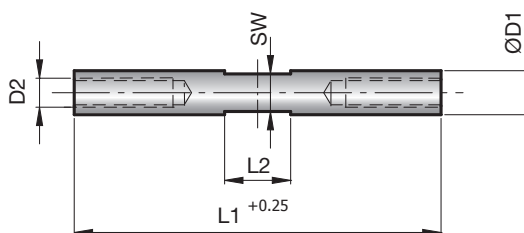


5

Verlängerung für flexible Auswerfereinheit



Extension for flexible ejector unit



Allongement pour l'unité d'éjecteur flexible

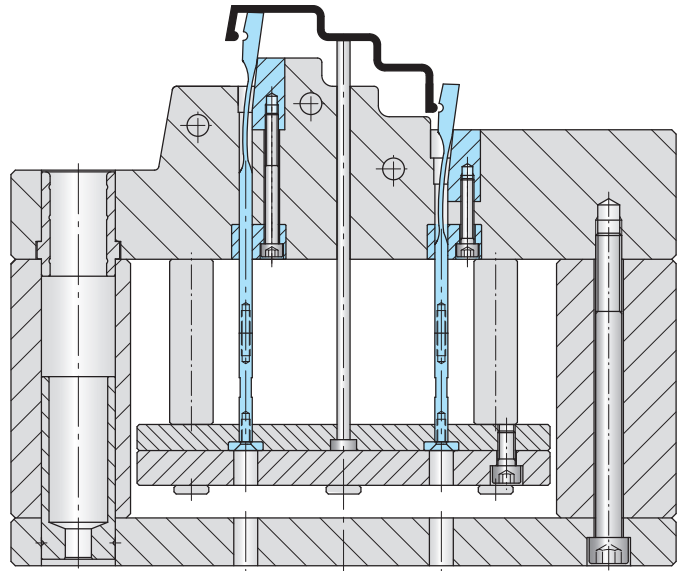
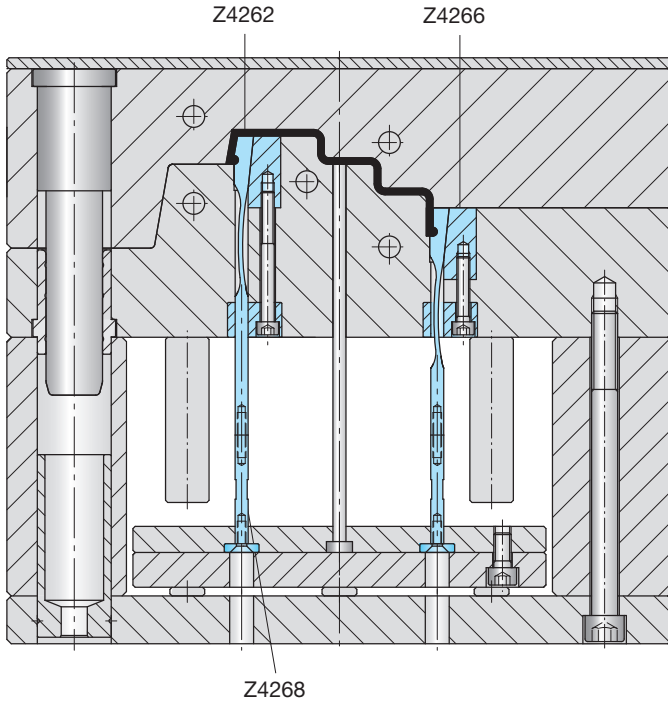
Z4268-

Mat.: 1.7225
~ 30HRC

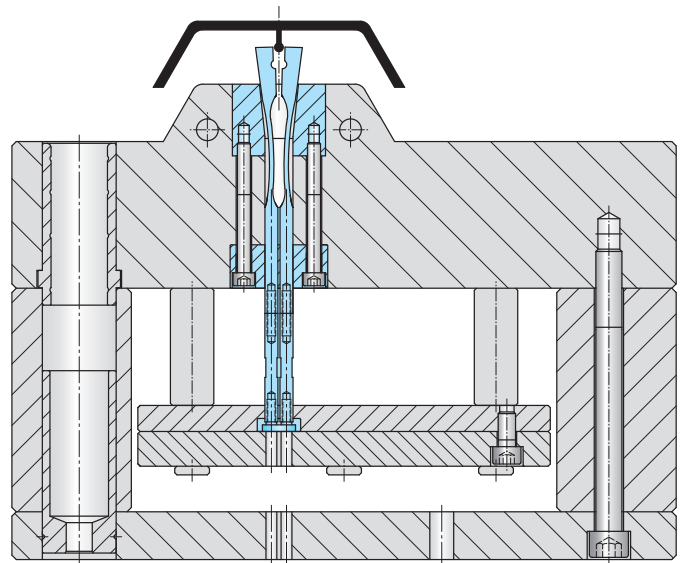
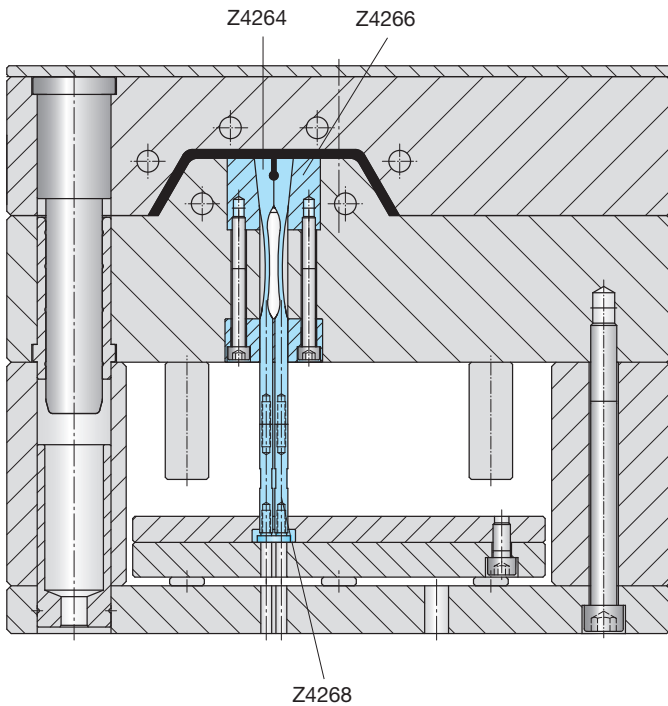
D1	L1	L2	SW	D2
6	50	9	3/16"	M4
6	100	9	3/16"	M4
8	50	9	1/4"	M5
8	100	9	1/4"	M5

Z4268-D1-L1





5

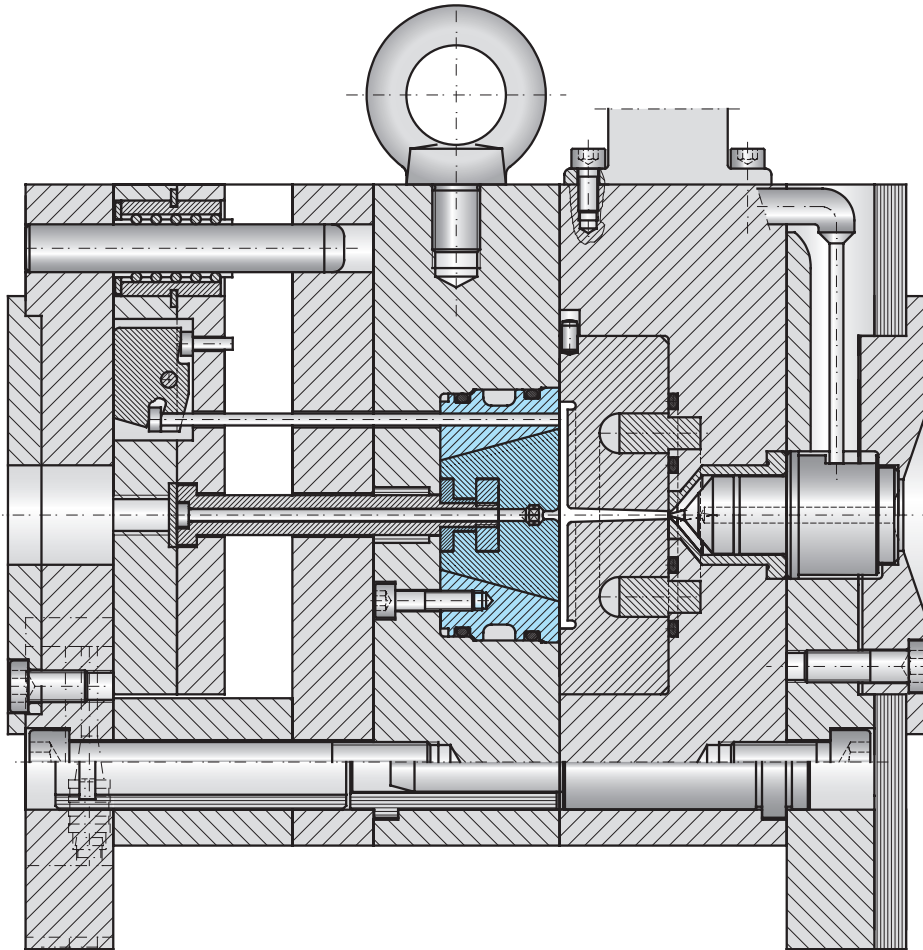


D 3002A 07.2018

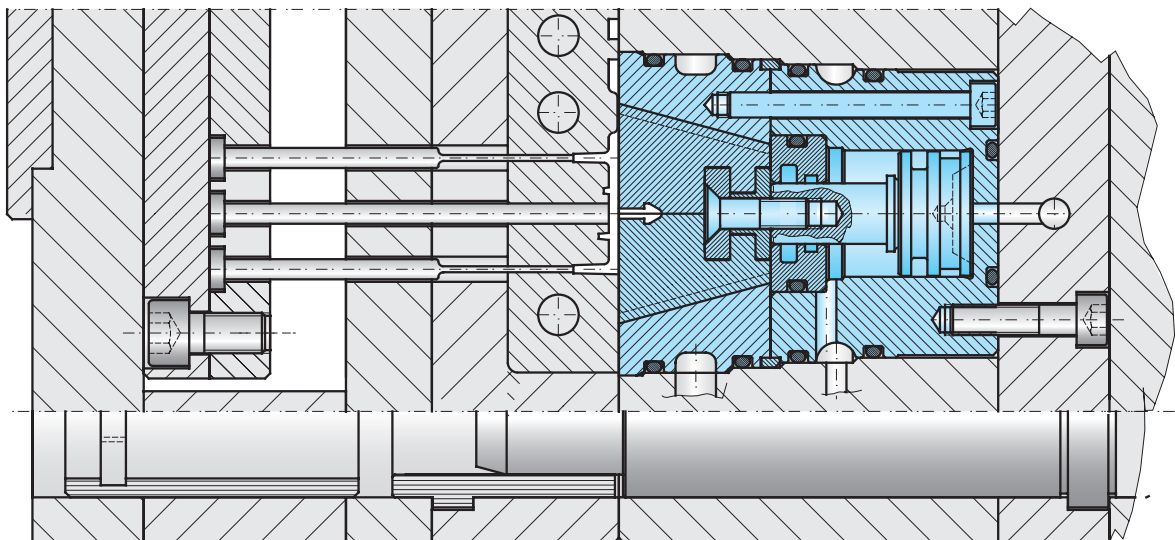
Falteinheiten

Folding units

Unités de pliage



5

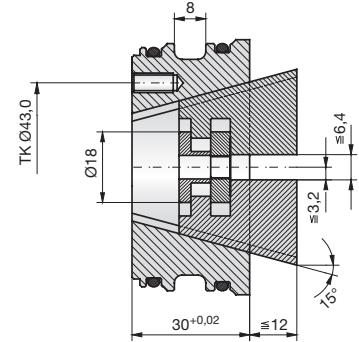
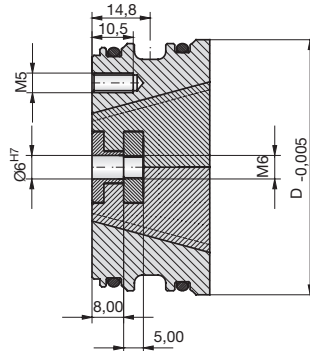
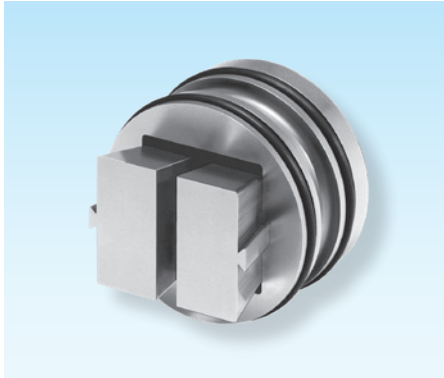


D 3002A 07.2018

Falteinheiten

Folding units

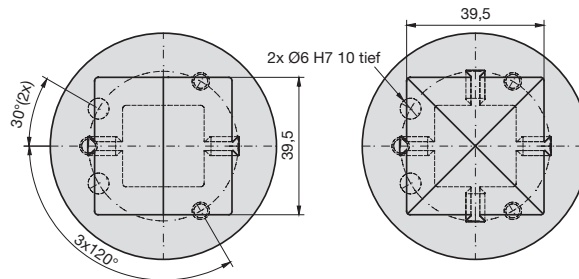
Unités de pliage



Z4280-

Mat.: 1.2343
~ 54HRC

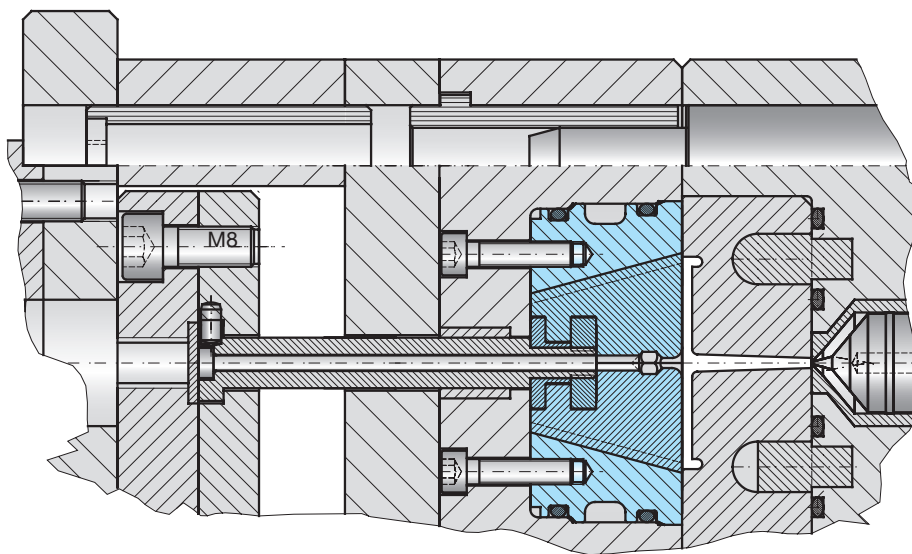
Z4280-Type



Type 1

Type 2

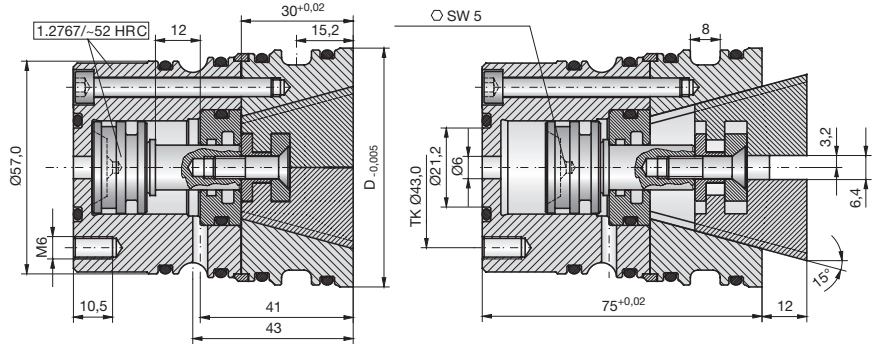
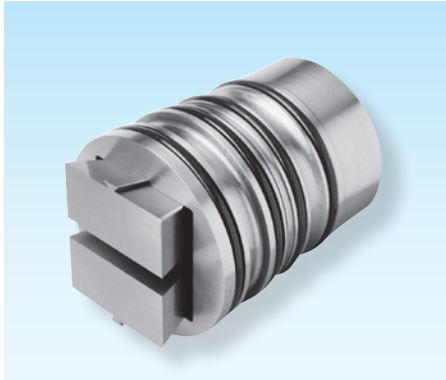
Type	D
1	64
2	64



Falteinheiten

Folding units

Unités de pliage



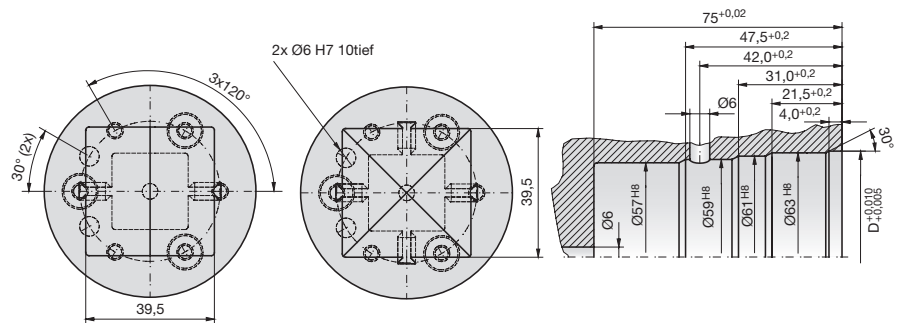
Z4282-

Mat.: 1.2343
~ 54HRC

 Z4282-Type



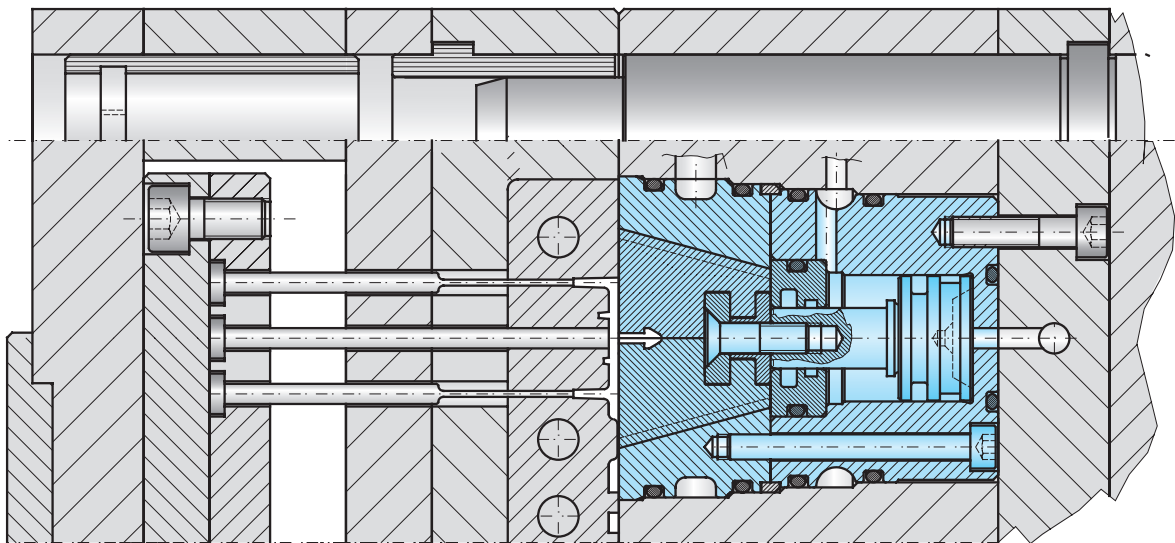
5



Type 1

Type 2

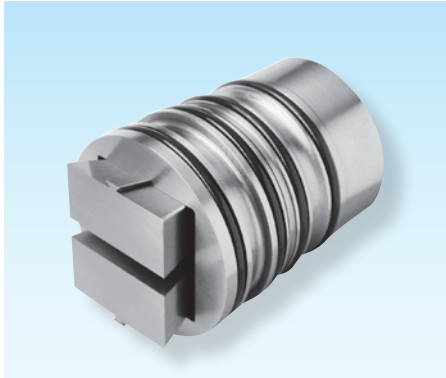
Type	D
1	64
2	64



Falteinheiten

Folding units

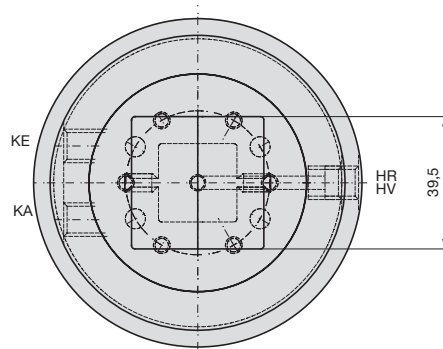
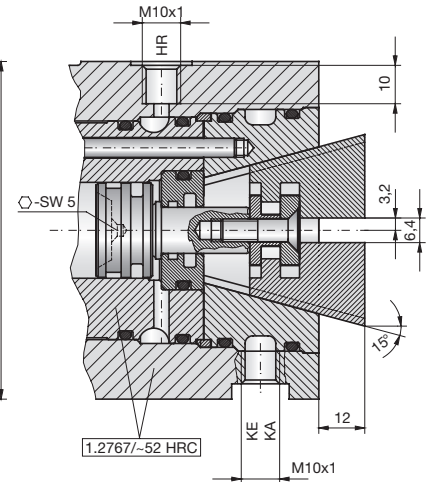
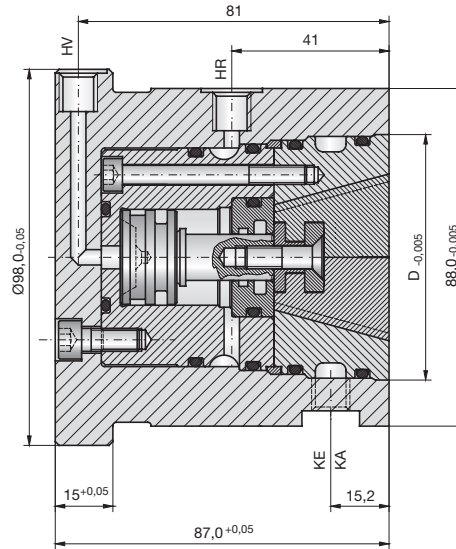
Unités de pliage



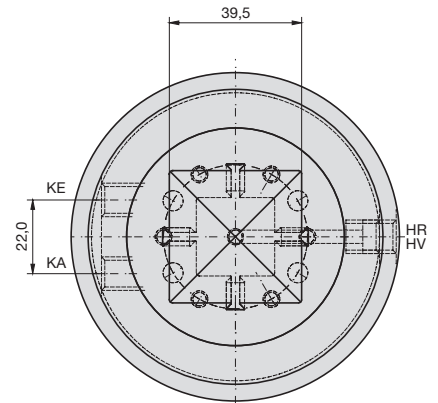
Z4284-

Mat.: 1.2343
~ 54HRC

 Z4284-Type



Type 1



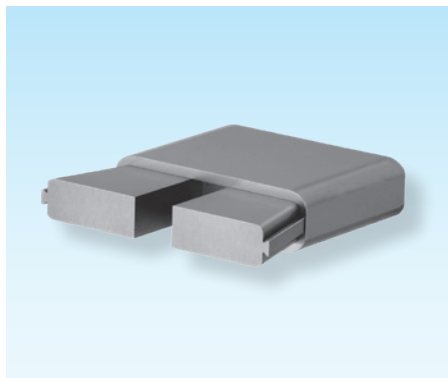
Type 2

Type	D
1	64
2	64

Falteinheiten in Sonderausführung

Specially designed folding units

Unités de pliage - exécution spéciale



Z4286-

Mat.: 1.2343
~ 54HRC



Z4286-1-SA-B-H
Z4286-2-S-D1-D2-H



5

Individuelle Anpassung

Standarddurchmesser 12-120 mm
Sonderausführungen auf Anfrage

Jeder Einfallkern ist eine Sonderanfertigung der speziell für Ihren Artikel konstruiert wird. Deshalb benötigen wir 3D-Konstruktionsdaten Ihres Artikel.

Individual adjustment

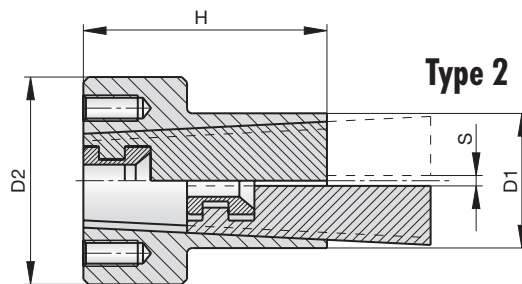
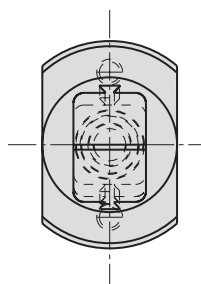
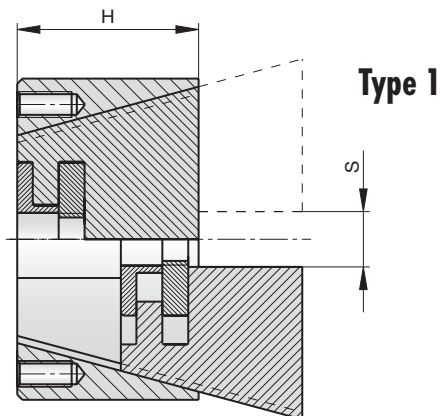
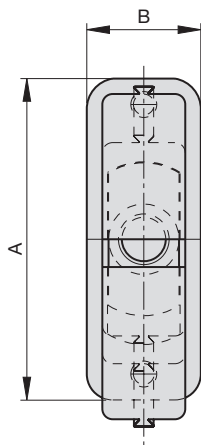
Standard diameter 12-120 mm
Special design on request

Each collapsible core is a special design which is particularly constructed for your article. Therefore we need 3D construction data of your article.

Ajustement individuel

Diamètre standard 12-120 mm
Modèles spéciaux sur demande

Chaque noyau éclipse est un modèle spécial qui est particulièrement construit pour votre article. Pour cette raison nous avons besoin de données de construction 3D de votre article.



Type

1

2

