

**ZYLINDERSTIFTE, SCHRAUBEN,
KUGELRASTEN**

DOWEL PINS, SCREWS, SPRING STOPS

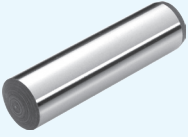
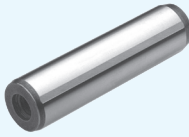
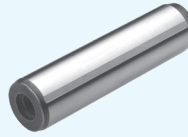










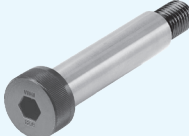

**GOUPILLES CYLINDRIQUES, VIS,
BUTEES A RESSORT**



STRACK®

NORMALIEN

2

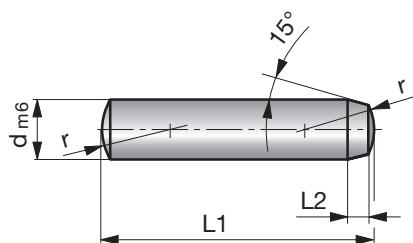
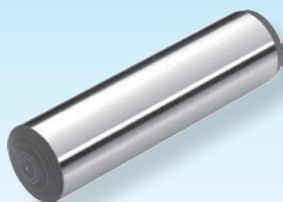
					
SN1973 2.106	SN1975 2.108	R523 2.109	Z811 2.109.1	SN3500 2.110	SN3540 2.112
					
SN3550 2.113	SN3600 2.114	Z3152 2.115	Z3154 2.115	Z3153 2.116	Z3156 2.116
					
Z3158 2.117	Z148 2.118	R1031 2.119			

2

Zylinderstifte

Dowel pins

Goupilles cylindriques



SN1973-

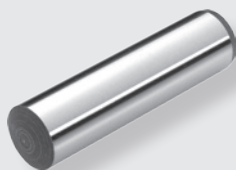
Mat.: 1.3505/
~EN ISO 8734 60 ±2HRC



SN1973-d-L1



d	L1	L2	r	d	L1	L2	r
1,5	6	0,5	1,6	4	12	1,0	4
	8	0,5	1,6		14	1,0	4
	10	0,5	1,6		16	1,0	4
	12	0,5	1,6		18	1,0	4
	14	0,5	1,6		20	1,0	4
	16	0,5	1,6		24	1,0	4
2	6	0,6	2	5	28	1,0	4
	8	0,6	2		32	1,0	4
	10	0,6	2		36	1,0	4
	12	0,6	2		40	1,0	4
	14	0,6	2		45	1,0	4
	16	0,6	2		50	1,0	4
2,5	18	0,6	2	6	10	1,2	5
	20	0,6	2		12	1,2	5
	6	0,7	2,5		14	1,2	5
	8	0,7	2,5		16	1,2	5
	10	0,7	2,5		18	1,2	5
	12	0,7	2,5		20	1,2	5
3	14	0,7	2,5	6	24	1,2	5
	16	0,7	2,5		28	1,2	5
	18	0,7	2,5		32	1,2	5
	20	0,7	2,5		36	1,2	5
	24	0,7	2,5		40	1,2	5
	6	0,8	3		45	1,2	5
4	8	0,8	3	6	50	1,2	5
	10	0,8	3		55	1,2	5
	12	0,8	3		60	1,2	5
	14	0,8	3		10	1,5	6
	16	0,8	3		12	1,5	6
	18	0,8	3		14	1,5	6
4	20	0,8	3	6	16	1,5	6
	24	0,8	3		18	1,5	6
	28	0,8	3		20	1,5	6
	32	0,8	3		24	1,5	6
	36	0,8	3		28	1,5	6
	40	0,8	3		32	1,5	6
4	8	1,0	4	6	36	1,5	6
	10	1,0	4		40	1,5	6



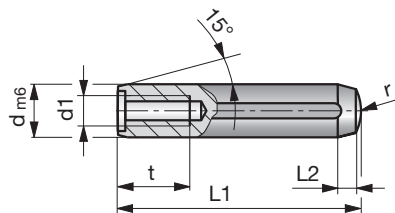
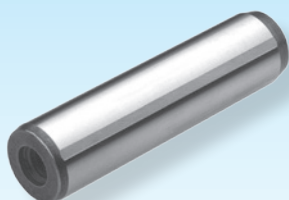
d	L1	L2	r	d	L1	L2	r	
6	45	1,5	6	12	60	2,5	12	
	50	1,5	6		70	2,5	12	
	55	1,5	6		80	2,5	12	
	60	1,5	6		90	2,5	12	
	70	1,5	6		100	2,5	12	
	80	1,5	6		120	2,5	12	
8	16	1,8	8	14	36	2,5	16	
	18	1,8	8		40	2,5	16	
	20	1,8	8		45	2,5	16	
	24	1,8	8		50	2,5	16	
	28	1,8	8		55	2,5	16	
	32	1,8	8		60	2,5	16	
	36	1,8	8		70	2,5	16	
	40	1,8	8		80	2,5	16	
	45	1,8	8		90	2,5	16	
	50	1,8	8		100	2,5	16	
	55	1,8	8		120	2,5	16	
	60	1,8	8		140	2,5	16	
	70	1,8	8		160	2,5	16	
	80	1,8	8		16	40	3,0	16
90	1,8	8	45	3,0		16		
100	1,8	8	50	3,0		16		
10	20	2,0	10	55		3,0	16	
	24	2,0	10	60		3,0	16	
	28	2,0	10	70		3,0	16	
	32	2,0	10	80		3,0	16	
	36	2,0	10	90		3,0	16	
	40	2,0	10	100		3,0	16	
	45	2,0	10	120		3,0	16	
	50	2,0	10	140		3,0	16	
	55	2,0	10	160		3,0	16	
	60	2,0	10	20		50	4,0	20
	70	2,0	10			55	4,0	20
	80	2,0	10		60	4,0	20	
	90	2,0	10		70	4,0	20	
	100	2,0	10		80	4,0	20	
120	2,0	10	90		4,0	20		
12	28	2,5	12		100	4,0	20	
	32	2,5	12		120	4,0	20	
	36	2,5	12		140	4,0	20	
	40	2,5	12		160	4,0	20	
	45	2,5	12					
	50	2,5	12					
55	2,5	12						

Zylinderstifte

Dowel pins

Goupilles cylindriques

2



SN1975-

Mat.: 1.7131/
~EN ISO 8735 60 ±2HRC



SN1975-d-L1

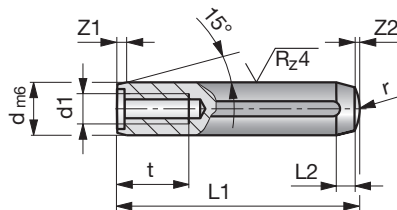
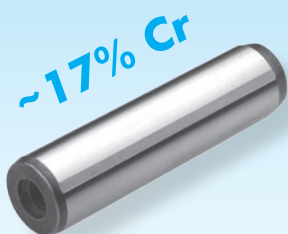


d	L1	d1	t	L2	r	d	L1	d1	t	L2	r	
6	16	M4	6	1,50	6	12	45	M6	10	2,50	12	
	18	M4	6	1,50	6		50	M6	10	2,50	12	
	20	M4	6	1,50	6		55	M6	10	2,50	12	
	24	M4	6	1,50	6		60	M6	10	2,50	12	
	28	M4	6	1,50	6		70	M6	10	2,50	12	
	32	M4	6	1,50	6		80	M6	10	2,50	12	
	36	M4	6	1,50	6		90	M6	10	2,50	12	
	40	M4	6	1,50	6		100	M6	10	2,50	12	
	45	M4	6	1,50	6		120	M6	10	2,50	12	
	50	M4	6	1,50	6		14	32	M8	12	2,50	16
	55	M4	6	1,50	6			36	M8	12	2,50	16
	60	M4	6	1,50	6			40	M8	12	2,50	16
20	M5	8	1,80	10	45	M8		12	2,50	16		
24	M5	8	1,80	10	50	M8		12	2,50	16		
28	M5	8	1,80	10	55	M8		12	2,50	16		
32	M5	8	1,80	10	60	M8	12	2,50	16			
36	M5	8	1,80	10	70	M8	12	2,50	16			
40	M5	8	1,80	10	80	M8	12	2,50	16			
45	M5	8	1,80	10	90	M8	12	2,50	16			
50	M5	8	1,80	10	100	M8	12	2,50	16			
55	M5	8	1,80	10	120	M8	12	2,50	16			
60	M5	8	1,80	10	16	40	M8	12	3,00	16		
70	M5	8	1,80	10		45	M8	12	3,00	16		
80	M5	8	1,80	10		50	M8	12	3,00	16		
90	M5	8	1,80	10		55	M8	12	3,00	16		
100	M5	8	1,80	10		60	M8	12	3,00	16		
24	M6	10	2,00	10		70	M8	12	3,00	16		
28	M6	10	2,00	10	80	M8	12	3,00	16			
32	M6	10	2,00	10	90	M8	12	3,00	16			
36	M6	10	2,00	10	100	M8	12	3,00	16			
40	M6	10	2,00	10	120	M8	12	3,00	16			
45	M6	10	2,00	10	20	45	M10	16	4,00	20		
50	M6	10	2,00	10		50	M10	16	4,00	20		
55	M6	10	2,00	10		55	M10	16	4,00	20		
60	M6	10	2,00	10		60	M10	16	4,00	20		
70	M6	10	2,00	10		70	M10	16	4,00	20		
80	M6	10	2,00	10		80	M10	16	4,00	20		
90	M6	10	2,00	10		90	M10	16	4,00	20		
100	M6	10	2,00	10		100	M10	16	4,00	20		
12	32	M6	10	2,50		12	120	M10	16	4,00	20	
	36	M6	10	2,50		12						
	40	M6	10	2,50		12						

Zylinderstifte

Dowel pins

Goupilles cylindriques



2

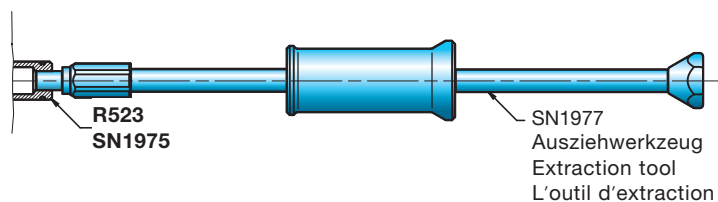
R523-

Mat.: INOX 17% Cr/
~EN ISO 8735
52 - 54 HRC

R523-d-L1



d	L1	d1	t	Z1	Z2	L2	r	d	L1	d1	t	Z1	Z2	L2	r	
6	16	M4	6	0,80	0,60	1,50	6	10	36	M6	10	1,20	1,00	2,00	10	
	20	M4	6	0,80	0,60	1,50	6		40	M6	10	1,20	1,00	2,00	10	
	24	M4	6	0,80	0,60	1,50	6		50	M6	10	1,20	1,00	2,00	10	
	30	M4	6	0,80	0,60	1,50	6		60	M6	10	1,20	1,00	2,00	10	
	32	M4	6	0,80	0,60	1,50	6		80	M6	10	1,20	1,00	2,00	10	
	36	M4	6	0,80	0,60	1,50	6		100	M6	10	1,20	1,00	2,00	10	
	40	M4	6	0,80	0,60	1,50	6		12	24	M6	12	1,60	1,30	2,0	12
	50	M4	6	0,80	0,60	1,50	6			30	M6	12	1,60	1,30	2,0	12
	60	M4	6	0,80	0,60	1,50	6			32	M6	12	1,60	1,30	2,0	12
	8	20	M5	8	1,00	0,70	1,80			10	40	M6	12	1,60	1,30	2,0
24		M5	8	1,00	0,70	1,80	10	50		M6	12	1,60	1,30	2,0	12	
30		M5	8	1,00	0,70	1,80	10	60		M6	12	1,60	1,30	2,0	12	
32		M5	8	1,00	0,70	1,80	10	80		M6	12	1,60	1,30	2,0	12	
36		M5	8	1,00	0,70	1,80	10	100		M6	12	1,60	1,30	2,0	12	
40		M5	8	1,00	0,70	1,80	10	16		32	M8	16	2,00	1,50	3,00	16
50		M5	8	1,00	0,70	1,80	10			40	M8	16	2,00	1,50	3,00	16
60		M5	8	1,00	0,70	1,80	10		50	M8	16	2,00	1,50	3,00	16	
80		M5	8	1,00	0,70	1,80	10		60	M8	16	2,00	1,50	3,00	16	
10		20	M6	10	1,20	1,00	2,00		10	80	M8	16	2,00	1,50	3,00	16
	24	M6	10	1,20	1,00	2,00	10		100	M8	16	2,00	1,50	3,00	16	
	30	M6	10	1,20	1,00	2,00	10		120	M8	16	2,00	1,50	3,00	16	
	32	M6	10	1,20	1,00	2,00	10									

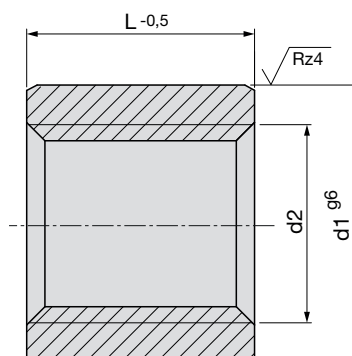


2

Zentrierhülsen

Centring sleeves

Douille de centrage



Z811-

Mat.: 1.7131
58±2HRC

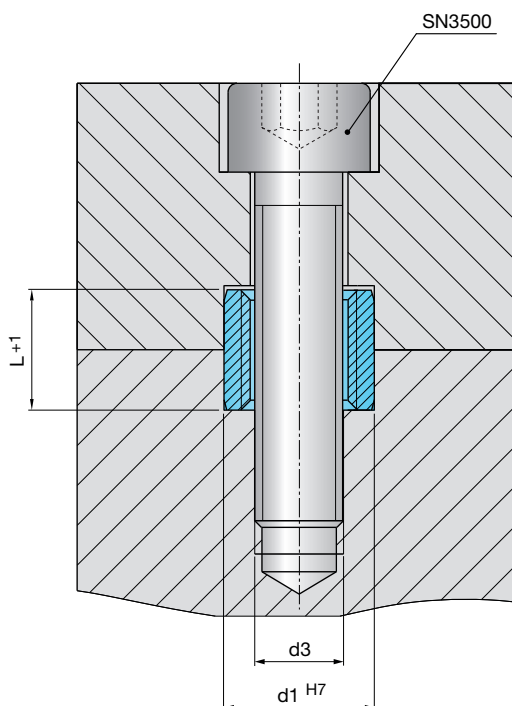
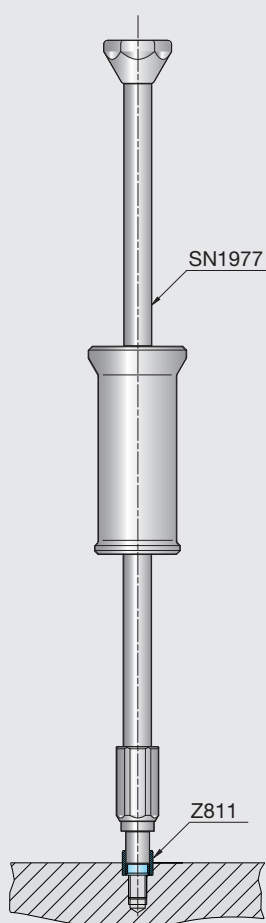
Z811-d2-L



d1	L	d2	d3
10	9	M6	M4
12	10	M8	M6
14	11,5	M10	M8
16	13,5	M12	M10
20	15,5	M16	M12
26	17,5	M16	M12
30	19,5	M20	M16
36	19,5	M24	M20
42	19,5	M30	M24
54	19,5	M36	M30

SN3500*

* nicht im Lieferumfang enthalten
not included in the extent of delivery
non compris dans le volume de livraison

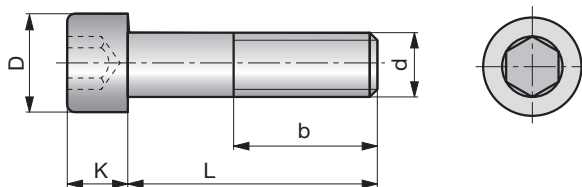


Zylinderkopfschrauben

Cylinder head cap screws

Vis 6 pans creux

2



SN3500-

DIN EN ISO 4762-10.9

SN3500-d-L



d	L	b	D	K	d	L	b	D	K
M3	8	6,5	5,5	3	M6	45	24,0	10,0	6
	12	10,5	5,5	3		50	24,0	10,0	6
	16	14,5	5,5	3		55	24,0	10,0	6
	20	18,0	5,5	3		60	24,0	10,0	6
	25	18,0	5,5	3		65	24,0	10,0	6
	30	18,0	5,5	3		70	24,0	10,0	6
M4	8	5,9	7,0	4	80	24,0	10,0	6	
	10	7,9	7,0	4	90	24,0	10,0	6	
	12	9,9	7,0	4	100	24,0	10,0	6	
	16	13,9	7,0	4	110	24,0	10,0	6	
	18	15,9	7,0	4	120	24,0	10,0	6	
	20	17,9	7,0	4	140	24,0	10,0	6	
	25	22,9	7,0	4	M8	12	8,3	13,0	8
	30	20,0	7,0	4		16	12,3	13,0	8
	35	20,0	7,0	4		18	14,3	13,0	8
	40	20,0	7,0	4		20	16,3	13,0	8
M5	10	7,6	8,5	5		25	21,3	13,0	8
	12	9,6	8,5	5		30	26,3	13,0	8
	16	13,6	8,5	5	35	31,3	13,0	8	
	18	15,6	8,5	5	40	28,0	13,0	8	
	20	17,6	8,5	5	45	28,0	13,0	8	
	25	22,6	8,5	5	50	28,0	13,0	8	
	30	22,0	8,5	5	55	28,0	13,0	8	
	35	22,0	8,5	5	60	28,0	13,0	8	
	40	22,0	8,5	5	65	28,0	13,0	8	
	45	22,0	8,5	5	70	28,0	13,0	8	
50	22,0	8,5	5	80	28,0	13,0	8		
55	22,0	8,5	5	90	28,0	13,0	8		
60	22,0	8,5	5	100	28,0	13,0	8		
M6	10	7,0	10,0	6	110	28,0	13,0	8	
	12	9,0	10,0	6	120	28,0	13,0	8	
	16	13,0	10,0	6	140	28,0	13,0	8	
	18	15,0	10,0	6	160	28,0	13,0	8	
	20	17,0	10,0	6	180	28,0	13,0	8	
	25	22,0	10,0	6	200	28,0	13,0	8	
	30	27,0	10,0	6	M10	16	11,5	16,0	10
	35	24,0	10,0	6		20	15,5	16,0	10
	40	24,0	10,0	6		25	20,5	16,0	10

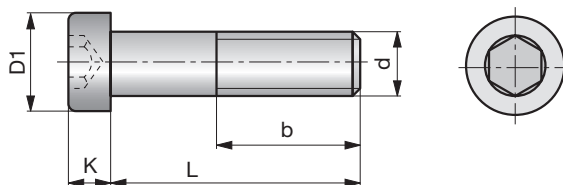
d	L	b	D	K	d	L	b	D	K	d	L	b	D	K
M10	30	25,5	16,0	10	M12	160	36,0	18,0	12	M20	60	52,5	30,0	20
	35	30,5	16,0	10		170	36,0	18,0	12		80	52,0	30,0	20
	40	35,5	16,0	10		180	36,0	18,0	12		100	52,0	30,0	20
	45	32,0	16,0	10		190	36,0	18,0	12		120	52,0	30,0	20
	50	32,0	16,0	10		200	36,0	18,0	12		140	52,0	30,0	20
	55	32,0	16,0	10		220	36,0	18,0	12		160	52,0	30,0	20
	60	32,0	16,0	10		240	36,0	18,0	12		180	52,0	30,0	20
	65	32,0	16,0	10		260	36,0	18,0	12		200	52,0	30,0	20
M10	70	32,0	16,0	10	M16	280	36,0	18,0	12	M24	220	52,0	30,0	20
	80	32,0	16,0	10		30	24,0	24,0	16		240	52,0	30,0	20
	90	32,0	16,0	10		35	29,0	24,0	16		260	52,0	30,0	20
	100	32,0	16,0	10		40	34,0	24,0	16		280	52,0	30,0	20
	110	32,0	16,0	10		45	39,0	24,0	16		300	52,0	30,0	20
	120	32,0	16,0	10		50	44,0	24,0	16		320	52,0	30,0	20
	130	32,0	16,0	10		55	49,0	24,0	16		340	52,0	30,0	20
	140	32,0	16,0	10		60	54,0	24,0	16		360	52,0	30,0	20
M12	150	32,0	16,0	10	65	44,0	24,0	16	400	52,0	30,0	20		
	170	32,0	16,0	10	70	44,0	24,0	16	M24	60	51,0	36,0	24	
	180	32,0	16,0	10	80	44,0	24,0	16		70	61,0	36,0	24	
	200	32,0	16,0	10	90	44,0	24,0	16		80	71,0	36,0	24	
	220	32,0	16,0	10	100	44,0	24,0	16		90	60,0	36,0	24	
	240	32,0	16,0	10	110	44,0	24,0	16		100	60,0	36,0	24	
	260	32,0	16,0	10	120	44,0	24,0	16		110	60,0	36,0	24	
	M12	20	14,8	18,0	12	130	44,0	24,0		16	120	60,0	36,0	24
25		19,8	18,0	12	M16	140	44,0	24,0		16	130	60,0	36,0	24
30		24,8	18,0	12		150	44,0	24,0	16	140	60,0	36,0	24	
35		29,8	18,0	12		160	44,0	24,0	16	150	60,0	36,0	24	
40		34,8	18,0	12		170	44,0	24,0	16	160	60,0	36,0	24	
45		39,8	18,0	12		180	44,0	24,0	16	170	60,0	36,0	24	
50		44,8	18,0	12		190	44,0	24,0	16	180	60,0	36,0	24	
55		36,0	18,0	12		200	44,0	24,0	16	200	60,0	36,0	24	
60	36,0	18,0	12	210		44,0	24,0	16	220	60,0	36,0	24		
M12	65	36,0	18,0	12	220	44,0	24,0	16	240	60,0	36,0	24		
	70	36,0	18,0	12	240	44,0	24,0	16	260	60,0	36,0	24		
	80	36,0	18,0	12	260	44,0	24,0	16	280	60,0	36,0	24		
	90	36,0	18,0	12	280	44,0	24,0	16	300	60,0	36,0	24		
	100	36,0	18,0	12	300	44,0	24,0	16	320	60,0	36,0	24		
	110	36,0	18,0	12	320	44,0	24,0	16	340	60,0	36,0	24		
	120	36,0	18,0	12	340	44,0	24,0	16	360	60,0	36,0	24		
	130	36,0	18,0	12	360	44,0	24,0	16	400	60,0	36,0	24		
140	36,0	18,0	12	400	44,0	24,0	16							
150	36,0	18,0	12	M20	50	42,5	30,0	20						

Zylinderkopfschrauben

Cylinder head cap screws

Vis 6 pans creux

2



SN3540-

DIN 7984 - 8.8

 SN3540-d-L

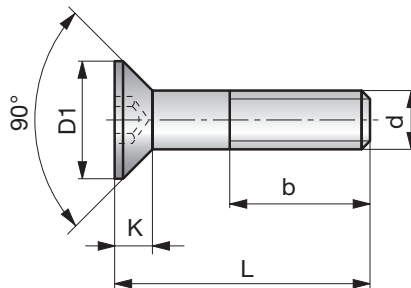


d	L	b	D1	K	d	L	b	D1	K
M3	10	8,5	5,5	2	M8	45	22,0	13,0	5,0
	16	14,5	5,5	2		50	22,0	13,0	5,0
M4	10	7,9	7,0	2,8	55	22,0	13,0	5,0	
	16	13,9	7,0	2,8	60	22,0	13,0	5,0	
M5	10	7,6	8,5	3,5	M10	16	11,5	16,0	6,0
	12	9,6	8,5	3,5		20	15,5	16,0	6,0
	14	11,6	8,5	3,5		25	20,5	16,0	6,0
	16	13,6	8,5	3,5		30	25,5	16,0	6,0
	20	17,6	8,5	3,5		35	30,5	16,0	6,0
	25	22,6	8,5	3,5		40	26,0	16,0	6,0
M6	30	16,0	8,5	3,5	45	26,0	16,0	6,0	
	10	7,0	10,0	4,0	50	26,0	16,0	6,0	
	12	9,0	10,0	4,0	55	26,0	16,0	6,0	
	14	11,0	10,0	4,0	60	26,0	16,0	6,0	
	16	13,0	10,0	4,0	70	26,0	16,0	6,0	
	20	17,0	10,0	4,0	M12	20	14,8	18,0	7,0
25	22,0	10,0	4,0	25		19,8	18,0	7,0	
30	18,0	10,0	4,0	30		24,8	18,0	7,0	
35	18,0	10,0	4,0	35		29,8	18,0	7,0	
40	18,0	10,0	4,0	40		34,8	18,0	7,0	
M8	16	12,3	13,0	5,0		45	39,8	18,0	7,0
	20	16,3	13,0	5,0		50	30,0	18,0	7,0
	25	21,3	13,0	5,0		55	30,0	18,0	7,0
	30	26,3	13,0	5,0	60	30,0	18,0	7,0	
	35	22,0	13,0	5,0	70	30,0	18,0	7,0	
40	22,0	13,0	5,0	80	30,0	18,0	7,0		

Senkkopfschrauben

Countersunk head screws

Vis de fixation



2

SN3550-

ISO 10642 - 8.8

 SN3550-d-L



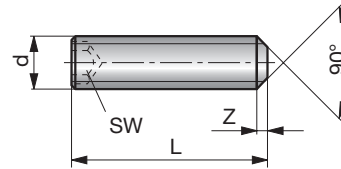
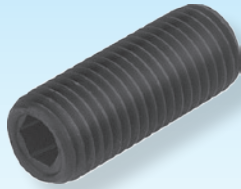
d	L	b	D1	K	d	L	b	D1	K
M3*	10	8	5,5	1,7	M8	30	25,0	15,2	5,0
	16	14,0	5,5	1,7		40	35,0	15,2	5,0
	20	18,0	5,5	1,7		50	28,0	15,2	5,0
M4	8	5,5	7,5	2,5	60	28,0	15,2	5,0	
	12	9,5	7,5	2,5	70	28,0	15,2	5,0	
	16	13,5	7,5	2,5	80	28,0	15,2	5,0	
	25	22,5	7,5	2,5	M10	20	13,8	19,2	6,2
30	17,5	7,5	2,5	25		18,8	19,2	6,2	
M5	20	16,9	9,5	3,1	30	23,8	19,2	6,2	
M6	12	8,3	11,3	3,7	M12	25	17,6	23,1	7,4
	16	12,3	11,3	3,7		30	22,6	23,1	7,4
	20	14,3	11,3	3,7		35	27,6	23,1	7,4
25	20,0	15,2	5,0	40		27,6	23,1	7,4	
M8	12	7,0	15,2	5,0					
	16	11,0	15,2	5,0					
	20	15,0	15,2	5,0					
	25	20,0	15,2	5,0					

Stiftschrauben

Locking screws

Vis de blocage

2



SN3600-

ISO 4026-45H
DIN 913-35H

 SN3600-d-L

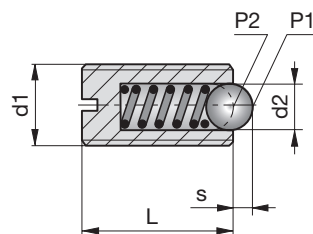


d	L	Z	SW	d	L	Z	SW
M4	8	0,70	2,0	M10	16	1,5	5,0
	12	0,70	2,0		20	1,5	5,0
M5	8	0,75	2,5		40	1,5	5,0
	12	0,75	2,5	M12	16	2,0	6,0
	16	0,75	2,5		25	2,0	6,0
M6	8	1,00	3,0		30	2,0	6,0
	12	1,00	3,0	35	2,0	6,0	
	16	1,00	3,0	M16	40	2,0	6,0
	20	1,00	3,0		20	2,0	8,0
M8	8	1,2	4,0		30	2,0	8,0
	16	1,2	4,0		35	2,0	8,0
	30	1,2	4,0	40	2,0	8,0	
	40	1,2	4,0				
M10	10	1,5	5,0				

Kugelrasten

Spring stops

Butées à ressort



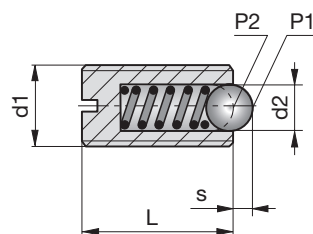
Z3152-

max. 100 °C
Mat.: 1.0715

 Z3152-d1



d1	L	s	d2	P1 (N)	P2 (N)
M5	12	0,9	3,0	7	13
M6	14	1,0	3,5	9	15
M8	16	1,5	5,0	15	30
M10	19	2,0	6,0	20	35
M12	22	2,5	8,0	30	55
M16	24	3,0	10,0	65	125



Z3154-

max. 250 °C
Mat.: 1.0715

 Z3154-d1



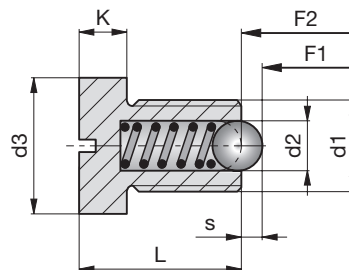
d1	L	s	d2	P1 (N)	P2 (N)
M3	7	0,5	1,5	2	3
M4	9	0,8	2,5	8	16
M5	12	0,9	3,0	7	13
M6	14	1,0	3,5	9	15
M8	16	1,5	5,0	15	30
M10	19	2,0	6,0	20	35
M12	22	2,5	8,0	30	55
M16	24	3,0	10,0	65	125

2

Federnde Druckstücke

Spring ejectors

Poussoirs à ressort

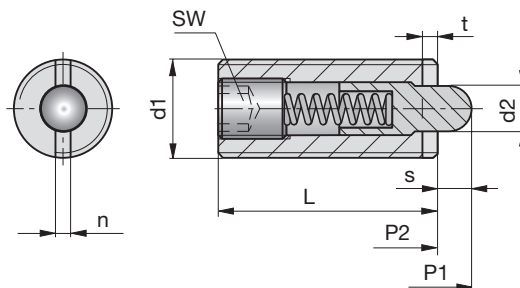
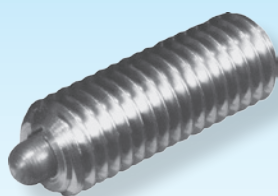


Z3153-

max. 250 °C
Mat.: 1.0718

d1	L	s	d2	d3	F1 (N)	F2 (N)	K
M8	16,5	1,5	4,5	13	18	31	5,5
M12	22	2,5	8	18	26	49	7

Z3153-d1



Z3156-

max. 250 °C
Mat.: 1.4305

d1	L	d2	s	t	n	SW	P1 (N)	P2 (N)
M5	18	2,4	2,3	0,8	1,2	1,5	7	20
M6	20	2,7	2,5	0,9	1,3	2,0	7	20
M8	22	3,5	3,0	1,4	1,5	2,5	9	35
M10	22	4,0	3,0	1,4	1,5	3,0	9	35
M12	28	6,0	4,0	2,0	2,7	4,0	15	55
M16	32	7,5	5,0	2,5	3,2	5,0	45	100
M20	40	10,0	7,0	3,0	3,5	6,0	70	140

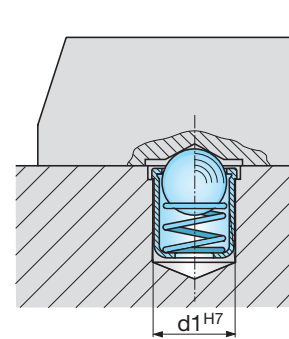
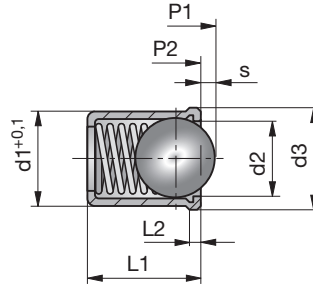
Z3156-d1



Kugelrasten

Spring stops

Butées à ressort



2

Z3158-

max. 250 °C
Mat.: 1.4303

 Z3158-d1



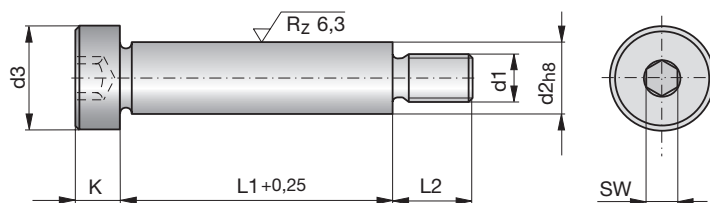
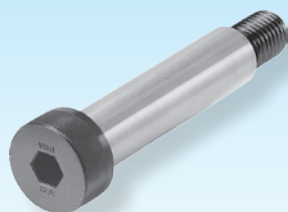
d1	L1	d2	d3	L2	s	P1 (N)	P2 (N)
4	5	3,0	4,6	0,9	0,90	2	5
5	6	4,0	5,6	0,9	1,00	4	7
6	7	5,0	6,5	1,0	1,50	6	12
8	9	6,5	8,5	1,1	1,80	6	12

Führungsschrauben

Guide screws

Vis épaulée

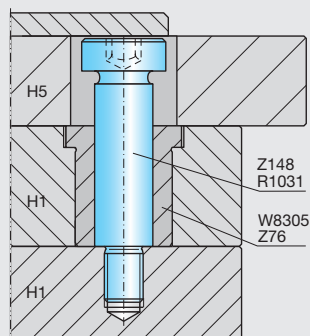
2



Z148-

12.9
1180-1370 N/mm²

Z148-d2-L1

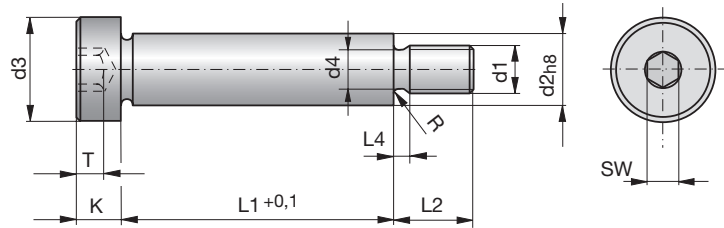


d2	L1	d1	d3	L2	K	SW	d2	L1	d1	d3	L2	K	SW	
6	10	M5	10	9,5	4,5	3	12	70	M10	18	16	9,0	6	
	12	M5	10	9,5	4,5	3		80	M10	18	16	9,0	6	
	16	M5	10	9,5	4,5	3		90	M10	18	16	9,0	6	
	20	M5	10	9,5	4,5	3		100	M10	18	16	9,0	6	
	25	M5	10	9,5	4,5	3		16	30	M12	24	18	11,0	8
	30	M5	10	9,5	4,5	3			40	M12	24	18	11,0	8
40	M5	10	9,5	4,5	3	50	M12		24	18	11,0	8		
60	M5	10	9,5	4,5	3	60	M12		24	18	11,0	8		
8	12	M6	13	11	5,5	4	70	M12	24	18	11,0	8		
	16	M6	13	11	5,5	4	80	M12	24	18	11,0	8		
	20	M6	13	11	5,5	4	90	M12	24	18	11,0	8		
	25	M6	13	11	5,5	4	100	M12	24	18	11,0	8		
	30	M6	13	11	5,5	4	120	M12	24	18	11,0	8		
	40	M6	13	11	5,5	4	20	40	M16	30	22	14,0	10	
50	M6	13	11	5,5	4	50		M16	30	22	14,0	10		
60	M6	13	11	5,5	4	60		M16	30	22	14,0	10		
70	M6	13	11	5,5	4	70		M16	30	22	14,0	10		
80	M6	13	11	5,5	4	80		M16	30	22	14,0	10		
90	M6	13	11	5,5	4	90		M16	30	22	14,0	10		
10	16	M8	16	13	7,0	5	100	M16	30	22	14,0	10		
	20	M8	16	13	7,0	5	120	M16	30	22	14,0	10		
	25	M8	16	13	7,0	5	24	50	M20	36	27	16,0	12	
	30	M8	16	13	7,0	5		60	M20	36	27	16,0	12	
	40	M8	16	13	7,0	5		70	M20	36	27	16,0	12	
	50	M8	16	13	7,0	5		80	M20	36	27	16,0	12	
60	M8	16	13	7,0	5	90		M20	36	27	16,0	12		
70	M8	16	13	7,0	5	100		M20	36	27	16,0	12		
12	80	M8	16	13	7,0	5	120	M20	36	27	16,0	12		
	16	M10	18	16	9,0	6	50	M20	36	27	16,0	12		
	20	M10	18	16	9,0	6	60	M20	36	27	16,0	12		
	25	M10	18	16	9,0	6	70	M20	36	27	16,0	12		
	30	M10	18	16	9,0	6	80	M20	36	27	16,0	12		
	40	M10	18	16	9,0	6	90	M20	36	27	16,0	12		
50	M10	18	16	9,0	6	100	M20	36	27	16,0	12			
60	M10	18	16	9,0	6	120	M20	36	27	16,0	12			

Führungsschrauben

Guide screws

Vis épaulée

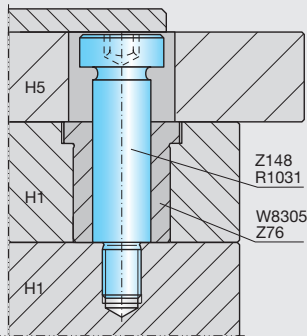


2

R1031-

Mat.: ~1.4057
~1050 N/mm²

R1031-d2-L1



d2	L1	d1	d3	d4	L2	L4	T	K	R	SW	d2	L1	d1	d3	d4	L2	L4	T	K	R	SW	
6	6	M5	9	3,9	8	1,2	2,5	4	0,4	3	10	120	M8	14	6,3	12	1,9	4	6	0,6	5	
	8	M5	9	3,9	8	1,2	2,5	4	0,4	3		12	12	M10	18	7,9	16	2,2	5	8	0,8	6
	10	M5	9	3,9	8	1,2	2,5	4	0,4	3		16	16	M10	18	7,9	16	2,2	5	8	0,8	6
	12	M5	9	3,9	8	1,2	2,5	4	0,4	3		20	20	M10	18	7,9	16	2,2	5	8	0,8	6
	16	M5	9	3,9	8	1,2	2,5	4	0,4	3		25	25	M10	18	7,9	16	2,2	5	8	0,8	6
	20	M5	9	3,9	8	1,2	2,5	4	0,4	3		30	30	M10	18	7,9	16	2,2	5	8	0,8	6
	25	M5	9	3,9	8	1,2	2,5	4	0,4	3		32	32	M10	18	7,9	16	2,2	5	8	0,8	6
	30	M5	9	3,9	8	1,2	2,5	4	0,4	3		40	40	M10	18	7,9	16	2,2	5	8	0,8	6
	32	M5	9	3,9	8	1,2	2,5	4	0,4	3		50	50	M10	18	7,9	16	2,2	5	8	0,8	6
	40	M5	9	3,9	8	1,2	2,5	4	0,4	3		60	60	M10	18	7,9	16	2,2	5	8	0,8	6
8	6	M6	11	4,6	10	1,5	3	5	0,5	4	16	70	M10	18	7,9	16	2,2	5	8	0,8	6	
	8	M6	11	4,6	10	1,5	3	5	0,5	4		80	80	M10	18	7,9	16	2,2	5	8	0,8	6
	10	M6	11	4,6	10	1,5	3	5	0,5	4		90	90	M10	18	7,9	16	2,2	5	8	0,8	6
	12	M6	11	4,6	10	1,5	3	5	0,5	4		100	100	M10	18	7,9	16	2,2	5	8	0,8	6
	16	M6	11	4,6	10	1,5	3	5	0,5	4		110	110	M10	18	7,9	16	2,2	5	8	0,8	6
	20	M6	11	4,6	10	1,5	3	5	0,5	4		120	120	M10	18	7,9	16	2,2	5	8	0,8	6
	25	M6	11	4,6	10	1,5	3	5	0,5	4		140	140	M10	18	7,9	16	2,2	5	8	0,8	6
	30	M6	11	4,6	10	1,5	3	5	0,5	4		20	20	M12	22	9,6	20	2,6	6	10	0,9	8
	32	M6	11	4,6	10	1,5	3	5	0,5	4		25	25	M12	22	9,6	20	2,6	6	10	0,9	8
	40	M6	11	4,6	10	1,5	3	5	0,5	4		30	30	M12	22	9,6	20	2,6	6	10	0,9	8
10	6	M6	11	4,6	10	1,5	3	5	0,5	4	20	40	M12	22	9,6	20	2,6	6	10	0,9	8	
	8	M6	11	4,6	10	1,5	3	5	0,5	4		50	50	M12	22	9,6	20	2,6	6	10	0,9	8
	10	M6	11	4,6	10	1,5	3	5	0,5	4		60	60	M12	22	9,6	20	2,6	6	10	0,9	8
	12	M6	11	4,6	10	1,5	3	5	0,5	4		70	70	M12	22	9,6	20	2,6	6	10	0,9	8
	16	M6	11	4,6	10	1,5	3	5	0,5	4		80	80	M12	22	9,6	20	2,6	6	10	0,9	8
	20	M6	11	4,6	10	1,5	3	5	0,5	4		90	90	M12	22	9,6	20	2,6	6	10	0,9	8
	25	M6	11	4,6	10	1,5	3	5	0,5	4		100	100	M12	22	9,6	20	2,6	6	10	0,9	8
	30	M6	11	4,6	10	1,5	3	5	0,5	4		120	120	M12	22	9,6	20	2,6	6	10	0,9	8
	32	M6	11	4,6	10	1,5	3	5	0,5	4		140	140	M12	22	9,6	20	2,6	6	10	0,9	8
	40	M6	11	4,6	10	1,5	3	5	0,5	4		20	20	M16	28	13,2	25	3	8	12	1	10
50	M6	11	4,6	10	1,5	3	5	0,5	4	25	25	M16	28	13,2	25	3	8	12	1	10		
60	M6	11	4,6	10	1,5	3	5	0,5	4	30	30	M16	28	13,2	25	3	8	12	1	10		
70	M6	11	4,6	10	1,5	3	5	0,5	4	40	40	M16	28	13,2	25	3	8	12	1	10		
80	M6	11	4,6	10	1,5	3	5	0,5	4	50	50	M16	28	13,2	25	3	8	12	1	10		
90	M6	11	4,6	10	1,5	3	5	0,5	4	60	60	M16	28	13,2	25	3	8	12	1	10		
100	M6	11	4,6	10	1,5	3	5	0,5	4	70	70	M16	28	13,2	25	3	8	12	1	10		
110	M6	11	4,6	10	1,5	3	5	0,5	4	80	80	M16	28	13,2	25	3	8	12	1	10		
120	M6	11	4,6	10	1,5	3	5	0,5	4	90	90	M16	28	13,2	25	3	8	12	1	10		
140	M6	11	4,6	10	1,5	3	5	0,5	4	100	100	M16	28	13,2	25	3	8	12	1	10		
160	M6	11	4,6	10	1,5	3	5	0,5	4	120	120	M16	28	13,2	25	3	8	12	1	10		